

2018 / 2019

Wills Hall Venue Guide

Wills Hall is the oldest University Hall of Residence in Stoke Bishop. Built of stone around a 19th century house and set in beautiful grounds on the edge of the Downs. It has spectacular views and excellent facilities. While the original Hall and quadrangle echo the traditions of academia, modern accommodation and a Conference Centre were added in 1990. This development provides a large fully-equipped meeting room – a combination of today's amenities with the richness of history.

The magnificent oak panelled banqueting room is perfect for hosting a range of functions and for laying-on a memorable feast with the expert help of the in-house catering team.

Parking is also available, and accommodation can be offered during the summer vacation.



Conference Centre and Foyer

Our versatile Conference Centre can accommodate up to 200 delegates seated theatre style. The foyer is ideal as a welcome reception area, and there is access to the gardens with outdoor seating.

Dimensions 16.2 x 14.6m²

Capacity

Theatre/Reception	200
Cabaret	150
Exams/Classroom	100
Boardroom	34

Our dedicated Conference staff are on hand throughout your event to provide a receptive service and ensure your day is a seamless success.

Audio Visual Staging

The Conference Centre is well equipped with a built-in PA system, LCD projector, electric screen, lectern, a hand-held lectern microphone and a roving/lapel microphone. We can also arrange additional technical support or staging requirements through our third party AV specialist.



Amenities

- Conference Centre
- Dining/Banqueting Hall
- Additional meeting rooms available outside of term-time only
- Accommodation available during the summer vacation only
- Event catering – buffet/self-service or formal dinner, tea/coffee & biscuits.
- Option to use the Bar (if requested in advance) minimum take of £175.00 per session.
- Car parking

! Please note that any electrical items brought on-site must be PAT tested.

Wills Hall, Parry's Lane, Stoke Bishop, Bristol, BS9 1AE

2018 / 2019



Dining Hall

The impressive Dining Hall boasts beautiful décor with oak panelled walls and chandeliers, seating up to 200 delegates. During term-time the Dining Hall can be booked for lunch only.

Dimensions / Capacity

21.0 x 10.7m² plus 4.0 x 10.7m² raised dais
27 x tables, 0.9 x 2.4m² with bench style seating
200 seated dinner

Catering

Our catering services have created a wide range of menus to suit all tastes and events, which will take you through the day. From a breakfast meeting to a formal meal, and anything in-between, we've a selection of delicious catering packages on offer.

Capacities for Conference Centre and Additional Breakout Rooms

	Available during term	Available out of term	Room Dimensions	Theatre	Cabaret	Boardroom	Exams / Classroom	Reception / Informal
Conference Centre	Yes	Yes	16.2 x 14.6m ²	200	150	34	64	200
Dining Hall	Lunch only	Yes	21.0 x 10.7m ² (plus 4.0 x 10.7m ² raised dais)	200 seated dinner on bench seating				
The Chapel	No	Yes	14.3 x 6.4m ²	70	-	-	20	-
Old Court Lounge	No	Yes	7.0 x 7.3m ²	40	-	-	-	40
Quiet Lounge	No	Yes	5.3 x 7.6m ²	-	-	-	-	20
Senior Common Room	No	Yes	7.6 x 6.4m ²	-	-	15	-	20
Book Room	No	Yes	4.57 x 7.32m ²	-	-	20	-	-
Bar	No	Yes*	11.6 x 10.4m ²	-	-	-	-	90

Wills Hall Bar

*The Bar can be available if requested in advance on the condition that there is a minimum take of £175.00 per session.

2018 / 2019



Old Quadrangle



Conference Centre – Cabaret Style



The Chapel



The Chapel



Quiet Lounge



Bar

Accommodation (available Summer Vacation only)

Bedrooms

All bedrooms are single sized and supplied with toiletries, linen, towels and tea/coffee making facilities. Rooms contain a bed, desk, chair, a wardrobe with hangers and a bedside table with lamp.

Standard Rooms are located within the old quadrangle original houses on 3 floors. Each house has 3 toilets, 2 baths and 2 showers. Each room is fitted with a washbasin. Delegates choosing standard accommodation may be housed in mixed blocks. Please note; ground floor standard rooms have stairs to the house and bathroom facilities.

Ensuite Rooms are in a modern block of 3 floors with a level entrance to the ground floor rooms. There is no lift to the upper floors. All rooms are fitted with a shower, toilet and washbasin.



Other Information

Internet

Is available free via The Cloud. Select 'The Cloud' from the available network list, open your internet browser and follow the instructions on screen.

Accessibility

We advise you to contact the Conference Office as early as possible to discuss the provision of additional support for delegates with accessibility requirements.

Conference Office

Tel +44 (0)117 95 45501 (Mon-Fri 8.30am – 5.00pm)

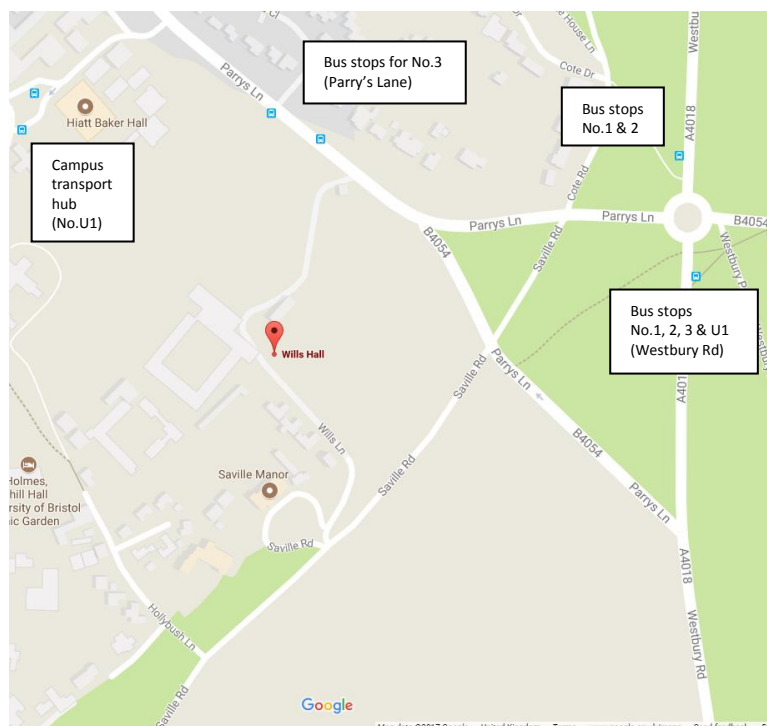
University Conference Office

The Hawthorns, Woodland Road, Bristol BS8 1UQ

conference-office@bristol.ac.uk

www.bris.ac.uk/conference

Directions, Maps and Parking



Local Bus Services

The bus services 1 and 2 depart from White Tree Roundabout which is a 5-10 minute walk away. These services can take you straight through to the main shopping areas and Bristol Temple Meads rail station.

The following bus services run to within walking distance of Wills Hall:

- U1** – This UniBus service runs during term-time only, from the City Centre directly into the Stoke Bishop campus. Alight at the transport hub and walk straight up the hill.
- 1/2** - These services run from opposite Station Approach Road by Bristol Temple Meads rail station. Alight at 'White Tree Roundabout' and walk down Parry's Lane.
- 3** - These services run from the Centre. Alight at 'White Tree Roundabout' and walk down Parry's Lane.
- 4** - Alight at 'Saville Road' and walk down Saville Road.

Bus timetable: www.firstgroup.com/bristol-bath-and-west/plan-journey/timetables/

Other Transport

If you are travelling by car, train or plane please visit the following website for further information:
www.bris.ac.uk/maps/

Travel Information and Parking

Recommended Directions by Car

The following route to Wills Hall from the local motorways is recommended. Whilst we appreciate that if approaching Bristol from the east, this route is slightly further than others, we believe that it is by far the easiest to follow.

Drive to Junction 17 of the M5 motorway (Cribbs Causeway)

Exit at Junction 17, and follow signs for Bristol Zoo via A4018 (local road names, in order of appearance: Cribbs Causeway, Wyck Beck Road, Passage Road, Brentry Hill, Falcondale Road, Westbury Road) until you reach the White Tree Roundabout at the Downs.

At White Tree Roundabout turn right onto Parry's Lane. You will see the gateway for Wills Hall on the left hand side after approx. 150 metres.

Car Parking

Parking is booked through a third party operator and is enforceable 24/7. For more information and charges please visit:
www.bristol.ac.uk/accommodation/parking/visitor-parking/

Taxi

Streamline: +44 (0)117 926 4001

By Train

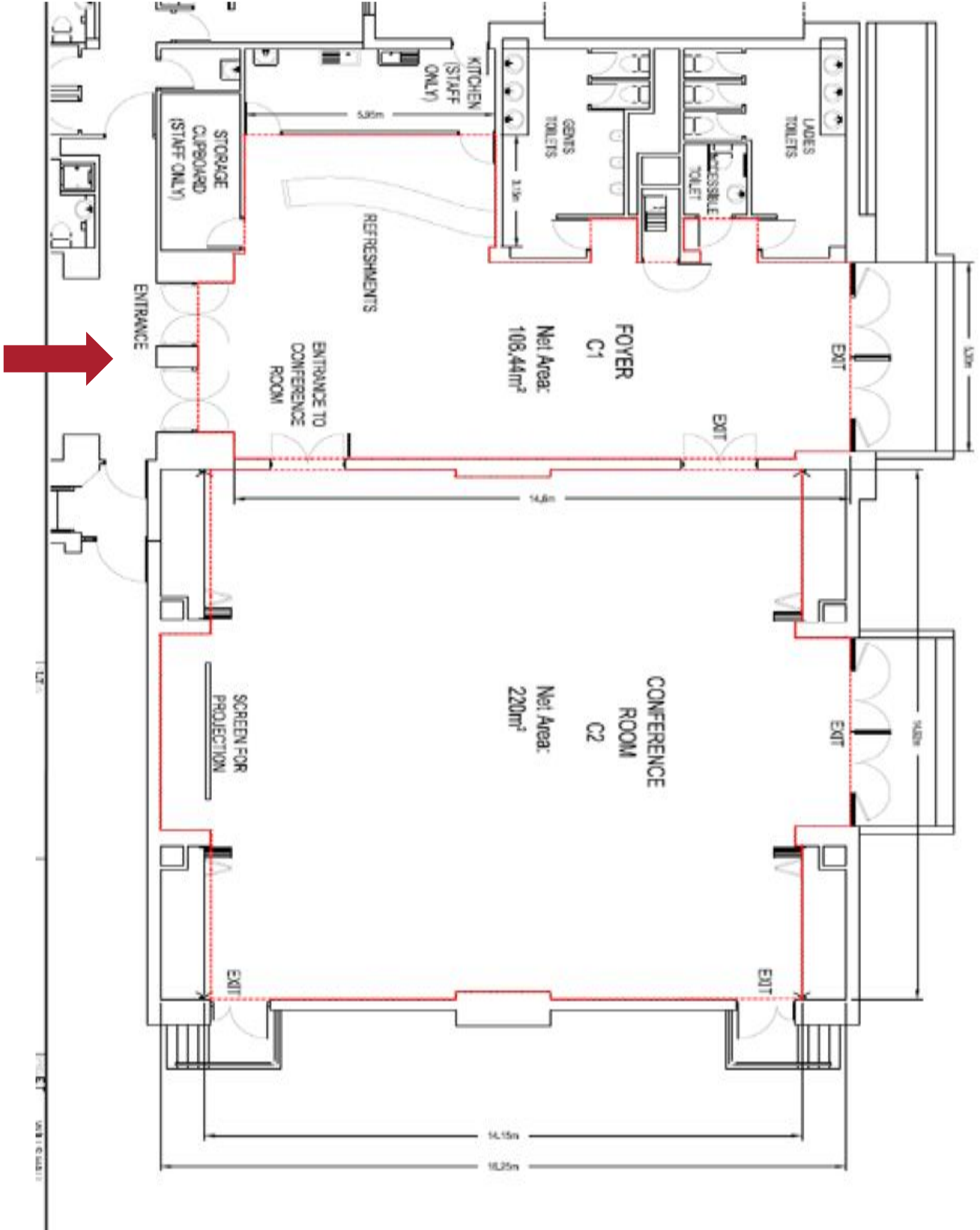
Temple Meads is the closest train station, there are two options depending on train and bus times.

1. Take a connecting train to Clifton Down train station then outside the station take buses 1/2/3 or 4 towards Cribbs Causeway (ask for White Tree Roundabout or Saville Road which are within walking distance to the Hall).
2. From Temple Meads walk down Temple Approach and take buses 1 or 2 from outside the Reckless Engineer pub (ask for White Tree Roundabout which will take you to within walking distance to the Hall).

By Air

Bristol International Airport is only 13 kilometres to the south of the city. The Bristol flyer provides a bus service from the airport into the city centre. For more information please visit:
www.flyer.bristolairport.co.uk

2018 / 2019 Floor Plan



2018 / 2019 Site Plan

Wills Hall



2018 / 2019 Stoke Bishop Area Plan

